

putpdf can add formatted text to a paragraph. You can *italicize*, ~~strikeout~~, underline, sub/super script², and **shade the text**. Also, you can easily add Stata results to your paragraph (mpg total = 1576.00)

putpdf can add formatted text to a cell. You can <i>italicize</i> , strikeout , <u>underline</u> , sub/super script ² , and shade the text . Also, you can easily add Stata results to your cell (mpg total = 1576.00)	

year	p25	p75	Min	Median	Max
1	2.8	3.2	2.1	2.8	3.5
2	2.5	3.35	2.5	2.9	3.8
3	3.3	3.7	2.2	3.3	3.7
4	2.9	3.4	2.9	3.4	3.4

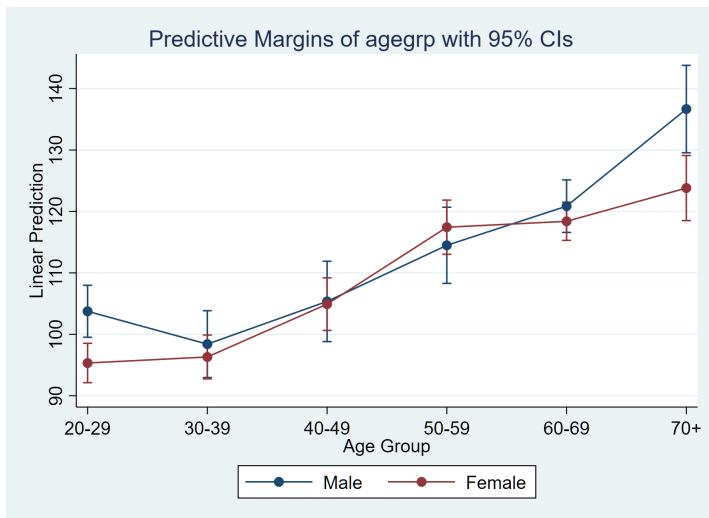
foreign	price	weight	mpg	rep78
Foreign	6072	3317	19.8	3.02
	3097	695	4.74	.838
	3291	1800	12	1
	15906	4840	34	5
Domestic	6385	2316	24.8	4.29
	2622	433	6.61	.717
	3748	1760	14	3
	12990	3420	41	5
Total	6165	3019	21.3	3.41
	2949	777	5.79	.99
	3291	1760	12	1
	15906	4840	41	5

mpg	Coef.	Std. Err.	t	P> t	[95% Conf. Interval]	
foreign	-1.966646	1.181383	-1.66	0.101	-4.325355	.3920619
weight	-.0041958	.002022	-2.08	0.042	-.0082328	-.0001588
headroom	-.0591903	.6449333	-0.09	0.927	-1.346841	1.228461
trunk	-.012178	.1589785	-0.08	0.939	-.3295888	.3052327
length	-.0631178	.0643524	-0.98	0.330	-.1916014	.0653659
turn	-.1648614	.1980936	-0.83	0.408	-.560368	.2306451
displacement	.0007923	.0102838	0.08	0.939	-.0197399	.0213246
_cons	53.1377	7.583645	7.01	0.000	37.99647	68.27894

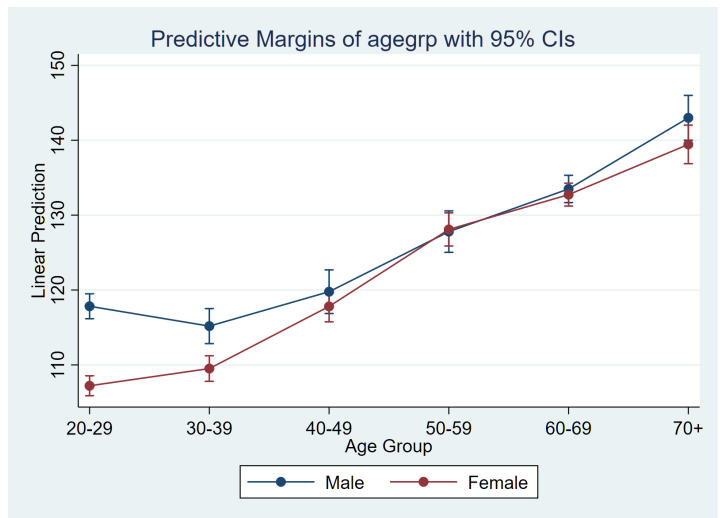
mpg	Coef.	Std. Err.	[95% Conf. Interval]	
-----	-------	-----------	----------------------	--

foreign	-1.967	1.181	-4.325	0.392
weight	-0.004	0.002	-0.008	-0.000
headroom	-0.059	0.645	-1.347	1.228
trunk	-0.012	0.159	-0.330	0.305
length	-0.063	0.064	-0.192	0.065
turn	-0.165	0.198	-0.560	0.231
displacement	0.001	0.010	-0.020	0.021
_cons	53.138	7.584	37.996	68.279

Variable	m1	m2
gear_ratio	3.033	1.357
turn	-0.733	-0.122
length	0.142	0.191
_cons	41.218	53.349
N	74	74
r2_a	0.536	0.628



(a) bmi=10



(a) bmi=20

Figure 1: Predictive margins of agegrp